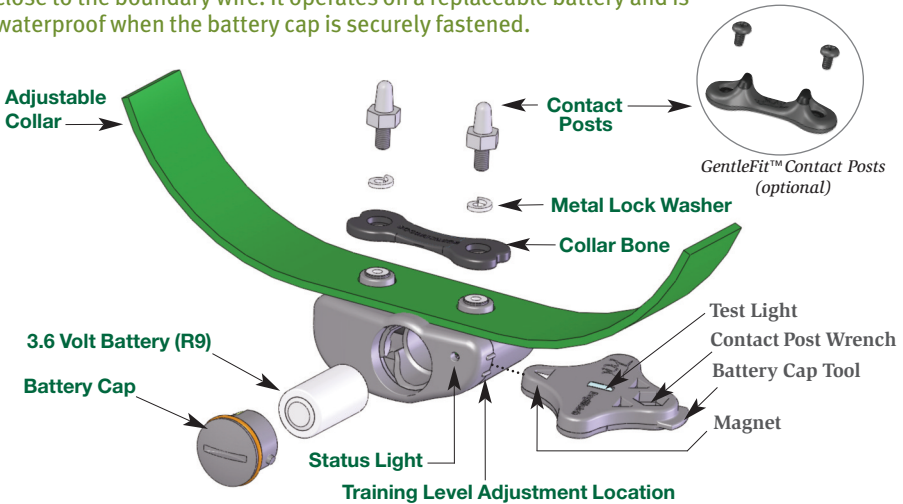


R7 and R9 Receiver Features

The lightweight radio receiver worn by the dog identifies the coded FM radio signal from the boundary wire. It creates an audible warning followed by stimulation if he comes too close to the boundary wire. It operates on a replaceable battery and is waterproof when the battery cap is securely fastened.



Adjustable Collar: Your receiver comes fitted to an adjustable nylon collar. The collar should be positioned above the dog's regular collar. The collar should be adjusted to insure that the contact posts touch the skin on the dog's neck. Check the fit for the first few days of wear to insure that the collar is not too tight or causing irritation to your pet's neck. *To help prevent irritation of the skin, we recommend removing the collar at night while your pet is inside.*

SafeLink® Digital FM Design: Our patented FM design allows the DogWatch receiver to recognize and activate only to our unique radio signal. This protects your pet from unintentional correction caused by stray radio signals which may be emitted by other electronic devices.

AutoMemory™: Our patented AutoMemory feature automatically adjusts the correction level of the receiver when your pet challenges the boundary. When the receiver is set to one of the AutoMemory levels, and the dog enters the signal field, the dog will receive the correction of the initial setting. If your dog leaves the signal field, the receiver will automatically advance the correction level setting by one, and only one level. If the dog does not re-enter the signal field within the next 24-hour period, the receiver defaults to the original setting. The AutoMemory feature operates when your Receiver Training Level is set to 4, 5, or 6.

FastReact™ Time: Whether your dog, strolls, runs or sprints into the Avoidance Zone, the receiver will react — and correct — within 1/8 of a second (.125).

Automatic Shutdown: The DogWatch system is designed to protect your dog from an over-correction in the unlikely event that your dog gets caught in the signal field. If your dog does not exit the signal field, the receiver will automatically stop correcting after 15 seconds — protecting your dog from over-correction. The receiver will automatically reset once the dog leaves the signal field.

Collar Bone: The Collar Bone, metal lock washers and contact posts fasten the receiver to the nylon collar. (A CollarBone is not used with the GentleFit™ posts.)

Contact Posts: The receiver comes with a set of stainless steel contact posts (stainless steel or composite with stainless steel tips.) Conductive plastic 'GentleFit'™ contact posts may be purchased separately if preferred or if recommended by your Dealer.

Your DogWatch Dealer will determine the correct set based on your dog's coat, neck shape, and skin sensitivity. **The posts must make contact with the skin in order for the dog to feel the correction.** In certain cases, your dealer may recommend clipping some of the hair around the contact posts so that they can touch the skin more easily. Use care if you find it necessary to tighten the contact posts with the collar wrench, as over-tightening could cause damage to the receiver.

Antenna: The receiver's omni-directional antenna design assures optimal reception from the signal field.

Test Light: The test light allows you to test the receiver. Hold the test light over the contact posts and carry the receiver into the signal field a few feet from the ground. When the receiver picks up the signal from the boundary wire, the audible or vibration warning will activate and the test light will come on.

Status Light The light continuously monitors your receiver and provides these features.

- **Start-Up** When you first insert the battery, the status light will **flash red and green**. This indicates that the receiver has started properly. Once started, the status light will continue to **flash green** once every 40 seconds indicating **normal operation**. In the event that the light does not flash, check the battery to be sure that it has been inserted properly.

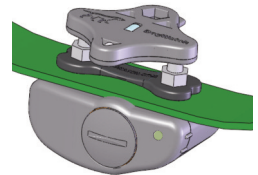
- **Training Level Indicator** When programming the training level of your receiver (see page 8), the status light will **flash green** in conjunction with audible beeps. The number of flashes/beeps will equal the training level you have chosen.

- **Signal Field Indicator** When testing the receiver in the signal field, the status light will **flash green** when the receiver is in the audible zone and will **flash red and green** when the receiver is in the correction zone.

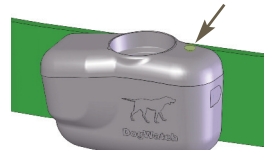
- **Correction Alert (TattleTale™)** You will be able to tell if your pet has tested the boundary by looking at the status light. The status light will **double flash green** every 40 seconds during the 24-hour period after the dog has entered the boundary area.

- **Battery Indicator** This feature monitors the voltage level of the battery. Once the receiver detects that the battery has reached a low voltage level, the status light will change from **blinking green** every 40 seconds to **blinking red** every 10 seconds. This indicates that your battery is close to the end of its useful life and you should change the battery within the next 3-4 days.

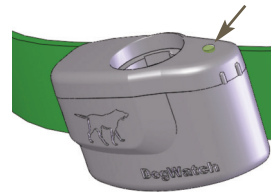
See page 7 for how to change your battery and reset your receiver.



Using the Test Light



The R7 Status Light



The R9 Status Light