

SmartFence™

SmartCollar™



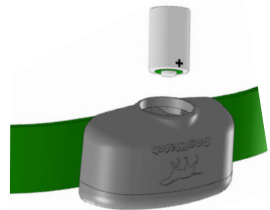
Smart products for today's pets.™



Batteries

Resetting the Low Battery Light

1. Remove the old battery.
2. Before inserting a new battery, let the SmartCollar **sit for five minutes** with no battery. (If you forget to wait prior to inserting a new battery, the "low battery" light will continue to blink red until it automatically resets itself after 24 hours.)
3. After five minutes, insert the new battery.



Insert battery POSITIVE end down.

Battery Insertion Instructions

The SmartCollar is powered by a 3.6 volt lithium battery with a battery life of up to 1 year. The Positive end of the battery must be inserted down.

IMPORTANT: The use of any battery other than a battery authorized by DogWatch Inc. can cause erratic operation of the SmartCollar and could cause permanent damage. The use of any unauthorized battery will void the warranty on the SmartCollar.

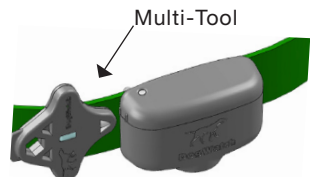
Setting the Receiver Levels

The SmartCollar Receiver has 7 LEVELS OF CORRECTION plus Audible Only.

Your DogWatch Dealer will start the training on the appropriate level according to your dog's personality and traits. As training continues and your dog adjusts to the Hidden Fence, the settings may need to be adjusted.

If you need to change the training level on the receiver, hold the magnet on your Multi-Tool to the training level adjustment location on the side of the receiver (see right). Hold the magnet steady and you will hear a series of beeps that indicate the current training level. The training level will begin to advance while the magnet is held in position. When you reach the desired setting, pull the magnet away from the receiver.

- "Audible Only" = 1 long beep
- Level 1 = **one** short beep
- Level 2 = **two** short beeps
- Level 3 = **three** short beeps, etc.



Use the magnet to set the training level on the Receiver.

When the magnet activates the receiver, **the number of beeps indicates the current training level.** As long as the magnet is held in place, it will advance through the receiver training level settings in the order shown in the chart on the next page.

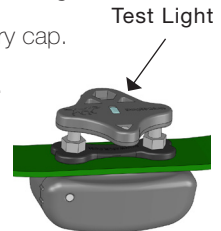
Note: Any magnet will activate the receiver.

SmartFence Collar

The SmartCollar™ is a lightweight radio receiver that identifies the radio signal from the boundary wire. It creates an audible warning followed by stimulation if the dog comes too close to the boundary wire.



1. **3.6 Volt Battery:** The SmartFence battery life is usually about 1 year.
2. **Battery Cap:** Our waterproof battery cap protects your battery from the elements. Remove using the Battery Cap tool (#6).
3. **Status Light:** The Status Light provides information about battery status and is used to determine training levels.
4. **Training Level Adjustment Location:** Your receiver provides eight Training Levels: Audible Only, Level 1 (extra low), Level 2 (low), Level 3 (low medium), Level 4 (medium), Level 5 (medium high), Level 6 (high), and Level 7 (extra high). When the receiver is first shipped from the manufacturer, it will automatically be set to Training Level 2 (low).
5. **Magnet:** The Magnet on your multi-tool is used to adjust the Training Level.
6. **Battery Cap Tool:** This is used to tighten or remove the battery cap.
7. **Contact Post Wrench:** Use to securely fasten Contact Posts.
8. **Test Light:** The test light allows you to test the receiver. Hold the test light over the contact posts and carry the receiver into the signal field a few feet from the ground. *When the receiver picks up the correction signal from the boundary wire, the test light will come on.*
9. **Collar Bone:** The Collar Bone, metal lock washers and contact posts fasten the receiver to the nylon collar. (A Collar Bone is not used with the GentleFit™ posts.)



10. Lock Washers: See #9.

11. Contact Posts: The receiver comes with a set of stainless steel contact posts. Conductive plastic 'GentleFit' contact posts may be purchased separately if preferred or if recommended by your Dealer.

Use care if you find it necessary to tighten the contact posts, as over-tightening could cause damage to the receiver.

The contact posts must touch the skin in order for the dog to feel the correction. Your DogWatch Dealer will determine the correct contact posts based on your dog's coat, neck shape, and skin sensitivity. In certain cases, your Dealer may recommend clipping some of the hair around the contact posts so that they can touch the skin more easily.

To prevent skin irritation from the contact posts, we recommend removing the collar at night and/or when not in use. Prolonged use of the collar or a collar that is too tight may lead to pressure sores, especially if the dog has sensitive skin.

FEATURES

Antenna:

The omni-directional antenna design assures optimal reception from the signal field.

SafeLink® Digital FM Design:

Our patented FM design allows the SmartCollar to recognize and activate only to our unique radio signal. This protects your pet from unintentional correction caused by stray radio signals which may be emitted by other electronic devices.

AutoMemory®:

Our patented AutoMemory™ feature automatically adjusts the correction level of the receiver when your pet challenges the boundary. When the receiver is set to one of the AutoMemory levels, and the dog enters the signal field, the dog will receive the correction of the initial setting. If your dog leaves the signal field, the receiver will automatically advance the correction level setting by one, and only one level. If the dog does not re-enter the signal field within the next 24-hour period, the receiver defaults to the original setting. The AutoMemory feature operates when your Receiver Training Level is set to 4, 5, or 6.

FastReact® Time:

Whether your dog, strolls, runs or sprints into the Avoidance Zone, the receiver will react—and correct—within 1/8 of a second (.125 sec).

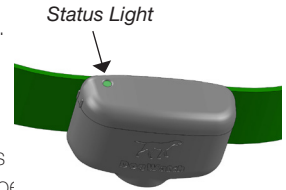
Automatic Shutdown:

The DogWatch SmartFence is designed to protect your dog from an over-correction in the unlikely event that your dog gets caught in the signal field. If your dog does not exit the signal field, the receiver will automatically stop correcting after 15 seconds—protecting your dog from over-correction. The receiver will automatically reset after the dog leaves the signal field.

Status Light


The status light on your SmartCollar provides these features.

- **Start-Up** When you first insert the battery, the status light will flash **red** and **green**. This indicates that the receiver has started properly. Once started, the status light will continue to flash green once every 40 seconds indicating normal operation. In the event that the light does not flash, check the battery to be sure that it has been inserted properly.
- **Training Level Indicator** When programming the training level of your receiver, the status light will flash green in conjunction with audible beeps. The number of flashes/beeps will equal the training level you have chosen.
- **Signal Field Indicator** When testing the receiver in the signal field, the status light will flash green when the SmartCollar is in the audible zone and will flash red and green when the SmartCollar is in the correction zone.
- **Correction Alert (TattleTale™)** You will be able to tell if your pet has tested the boundary by looking at the status light. The status light will double flash green every 40 seconds during the 24-hour period after the dog has entered the boundary area.
- **Battery Indicator** This feature monitors the voltage level of the battery. Once the SmartCollar detects that the battery has reached a low voltage level, the status light will change from blinking green every 40 seconds to blinking red every 10 seconds. This indicates that your battery is close to the end of its useful life and you should change the battery within the next 3-4 days.




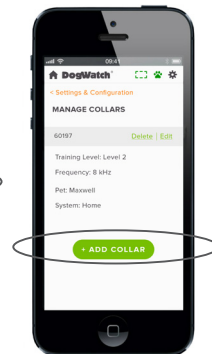
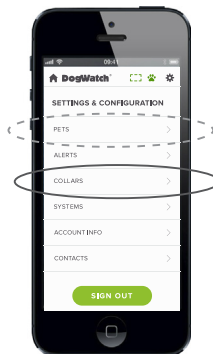
Adding a Collar to the SmartFence

Adding an additional pet:

1. Open your SmartFence Web App.
2. Press the Settings icon. 
3. Select 'Pets'.
4. Add the pet's info.
5. Follow prompts for adding a new collar.

Adding a collar for a pet who already has a Web App profile:

1. Open your SmartFence Web App.
2. Press the Settings icon. 
3. Select 'Collars'.
4. Select 'Add Collar'.
5. Follow prompts for adding a new collar.



Transmitter and Training Level Settings

Receiver Training Levels	TRANSMITTER MODE AND RATE SETTINGS			
	Mode A Rate 1	Mode A Rate 2	Mode A Rate 3	Mode B QuickAlert™
Audible Only* (extra low) 1	Transmitter Rate Fixed at Medium			
(low) 2	Slow	Medium	Fast	Slow
(low medium) 3	Slow	Medium	Fast	Medium
(medium) 4	Fast			Fast
(medium high) 5	X-Fast			X-Fast
(high) 6	XX-Fast			XX-Fast
(extra high) 7	Audible* and XXX Fast Correction are Simultaneous			

} AutoMemory™ self activates and advances to the next level.

Example: If the receiver is on Level 1 and the transmitter is on Rate 1, your dog will receive the lowest level of correction and the least number of pulses per second.

Please, remember that if your Receiver Level is set to 1, 2, or 3 and you switch the Training Mode to QuickAlert (Mode B), your training setting may change. For example, if the receiver is set to Level 3 and the transmitter is set to Rate 1, your dog will receive a slow correction. If you switch your Training Mode to QuickAlert, your dog will now receive a fast correction.

PROGRAMMING TIPS

Recommended Settings: The majority of dogs respond well to Transmitter Rate Setting 2 or 3 and a Receiver Training Level 3, 4 or 5. Sensitive or small dogs that train easily respond best to lower rate settings and lower training levels. If your dog is not responding to training, your DogWatch Dealer will adjust your system to a higher training level.

If Your Dog Is Hard To Train: Training Levels 5, 6 and 7 are specifically designed to meet the needs of hard to train or stubborn dogs. These settings will provide the extra correction that some dogs need as part of their training.

Multiple Dogs: Our receivers allow you to select individual settings for each dog.

This means that one SmartCollar can be set to Audible Only* during training while another dog is still protected with the correction feature enabled. It is recommended that the Audible Only* setting be used only during supervised training sessions.

Important

Never change the Receiver settings when your dog is wearing the SmartCollar.