

Typical Response Time of Competitive System

Time from when the receiver picks up the signal to initiate the correction until the correction happens.

(The correction signal is triggered *after* the audible warning except in IF 'no delay' setting.)

Depiction of the relative position of the dog (after the audible warning) when the correction occurs. Based on dog running at ~10 miles/hr.

DOGWATCH

1 second

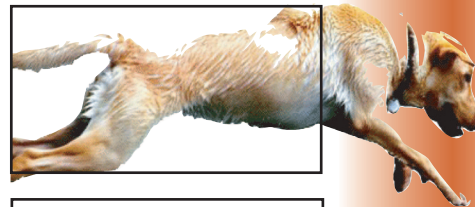


INVISIBLE FENCE 700

No Delay
(audible + correction triggered at same time)



Normal Delay



INVISIBLE FENCE 800

No Delay
(audible + correction triggered at same time)



Normal Delay



BOUNDARY

FastReact®
.125 seconds

.310 seconds

1.634 seconds

.120 seconds

1.630 seconds

Dogwatch = Distance based

The audible warning zone and the correction zone are separate. After the audible warning, the dog only gets a correction if it continues further into the correction zone.

Invisible Fence = Time based

The audible warning zone and the correction zone are not separate. If the dog is not able to retreat completely out of the zone after the audible warning, he will get a correction even if he does not continue towards the boundary.

The correction should occur **before** the dog reaches the boundary
... not when he is travelling over it!